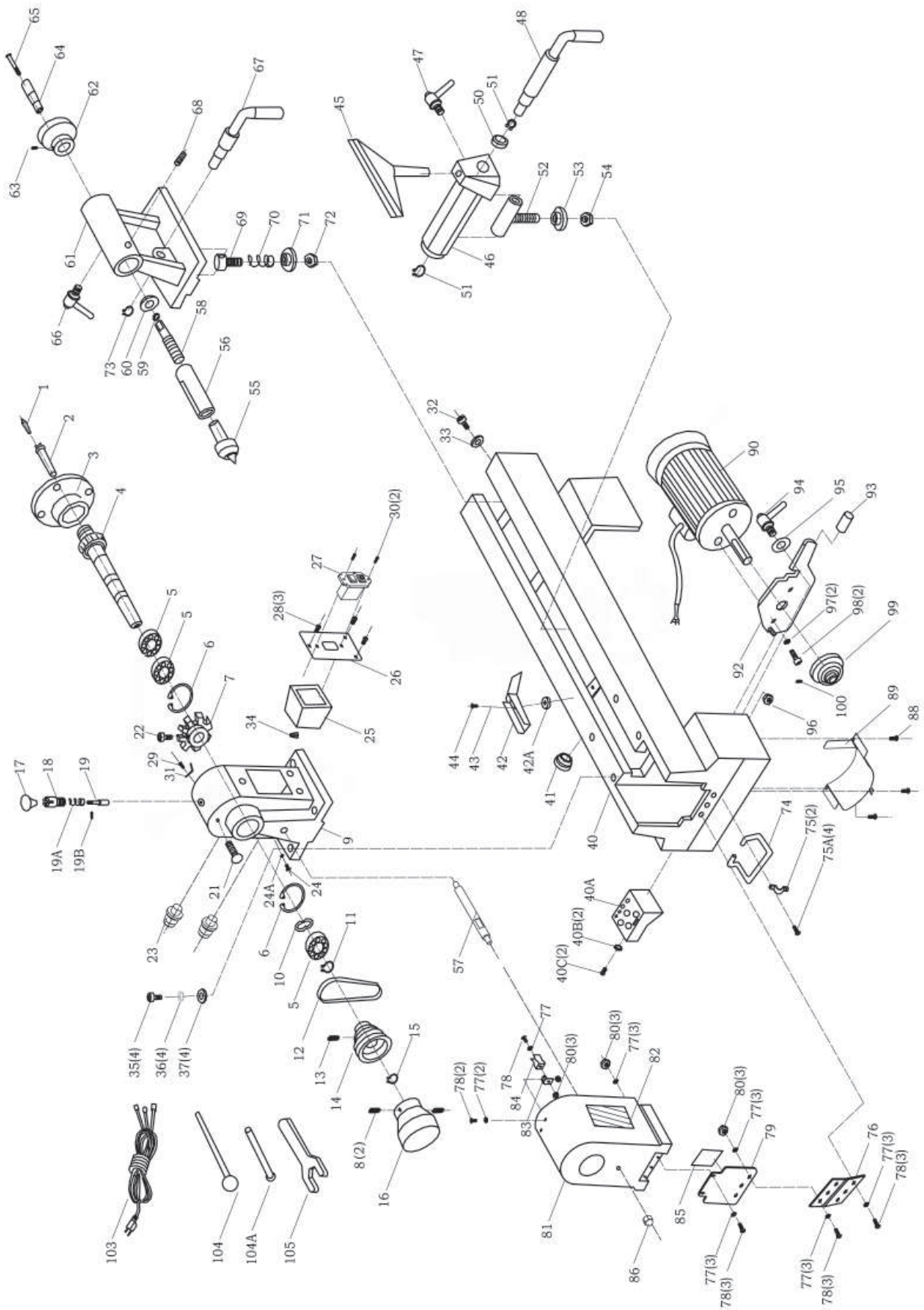


Explosion Diagram



Parts List

Part No.	Description	Part No.	Description
1	Center point	52	Cam bolt
2	Spur center	53	Clamp disc
3	Faceplate	54	Lock nut M10
4	Spindle shaft	55	Live center
5	Bearing 6005-2Z	56	Axle sleeve
6	Ring retaining 47mm	57	Locking bolt
7	Indexing gear	58	Bolt
9	Headstock	59	Ring retaining
10	Undee washer 47mm	60	Washer 14mm
11	Ring retaining 25mm	61	Tailstock
12	Poly-v-belt	62	Handwheel
13	Hex socket set screw M6x10	63	Hex. Socket set screw M6x12
14	Spindle pulley	64	Handwheel handle
15	Ring retaining 19mm	65	Screw
16	Handwheel	66	Lock handle
17	Spindle lock knob	67	Lock lever
18	Spindle lock tube	68	Hex. Socket set screw M5x8
19	Spindle lock shaft	69	Cam bolt - tailstock
19A	Spindle lock spring	70	Spring
19B	Pin roll 3x16	71	Clamp disc
21	Rounded insert	72	Lock nut M10
22	Hexagon socket cap screw	73	Ring retaining 10mm
23	Strain relief	74	Lifting handle
24	Pan head screw M5	75	Lifting handle mounting bracket
24A	Locking washer	75A	Pan head screw M5x10
25	Switch box	76	Hinge
26	Switch plate	77	Lock washer M4
27	NVR switch	78	Pan head screw M4x10
28	Pan head screw M6x10	79	Motor pulley cover
29	Cross recessed pan head screw	80	Hex. Nut M4
30	Pan head tapping screw	81	Access cover
31	Pointer	83	Lock housing bracket
34	Close-end connector	84	Lock housing
35	Hex. Socket head screw M6x35	85	Belt position chart
36	Spring washer 6mm	90	Motor
37	Washer 6mm	92	Belt tension handle
40	Bed	93	Belt tension handle cover
40A	Tool holder	94	Motor tension lock
40B	Washer 6mm	95	Washer 8mm
40C	Pan head screw M6x15	96	Lock nut M8
41	Cable tube	97	Undee washer 6mm
42	Dust chute	98	Hex. Socket head screw M6x15
43	Special washer 5mm	99	Motor pulley
44	Pan head screw M5x10	100	Hex. Socket set screw M6x12
45	Tool rest	103	Power cable
46	Tool rest bracket	104	Knockout bar
47	Lock handle	104A	Knockout bar
48	Lock lever	105	Wrench
50	Collar		
51	Ring retaining 12mm		